



Xprinter: Thermal Receipt Printer Installation Guide (Windows Vista 64-bit)

Thank you for purchasing the USB Swiper Thermal Receipt Printer for the Windows 32-bit Operating Systems.

This installation guide will walk you through the necessary steps in order to install this printer properly on your system and use with USB Swiper™ software.

As always, if you have any questions please call our Technical Support Team @ (816)332-6545.

Step One: Unpacking your Thermal Printer

1. Unpack your printer and save the packaging materials.
2. Make sure you have the following items below. (Thermal receipt paper not included.)
 - Printer
 - Power adapter
 - Power cord
 - USB to DB25 adapter cable

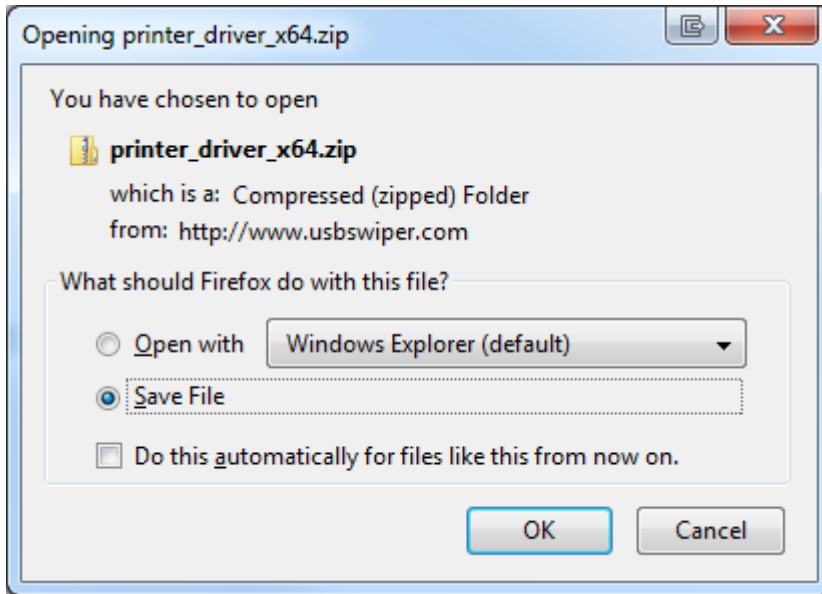
Step Two: Connecting your Xprinter Thermal Receipt Printer

1. Plug the power cord into the power adapter.
2. Plug the power adapter into the printer.
3. Plug the other end into a power outlet.
4. Plug the USB adapter cable into the printer and tighten the screws.
5. Plug the other end of the USB adapter into an available USB port on your computer.

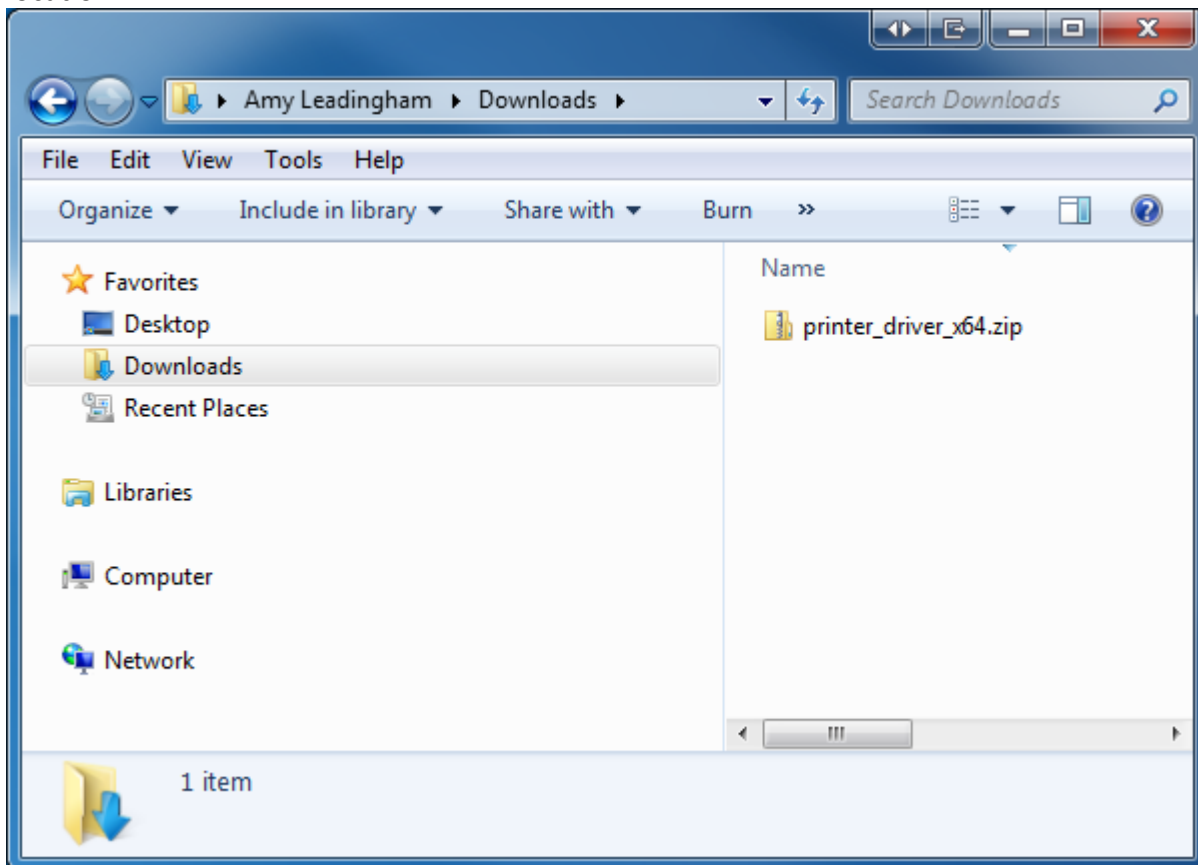
Step Three: Installing the Software

1. Close all running applications.
2. Check your Operating System to confirm you're running a 64 not 32-bit OS.
 - Go to the Start Menu > Right-click on Computer
 - Next to System type, it will say 64-bit Operating System.
3. Go to www.usbswiper.com/download and click on the 64-bit link next to Xprinter Drivers link.

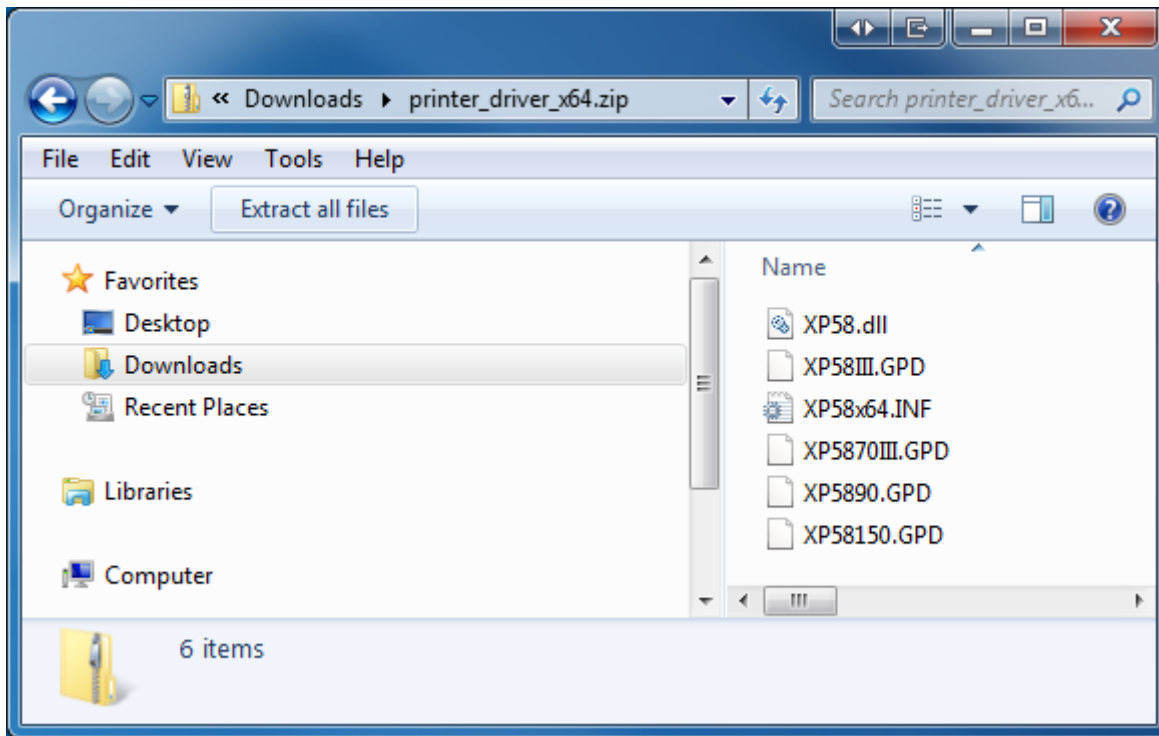
Select Save File and click OK.



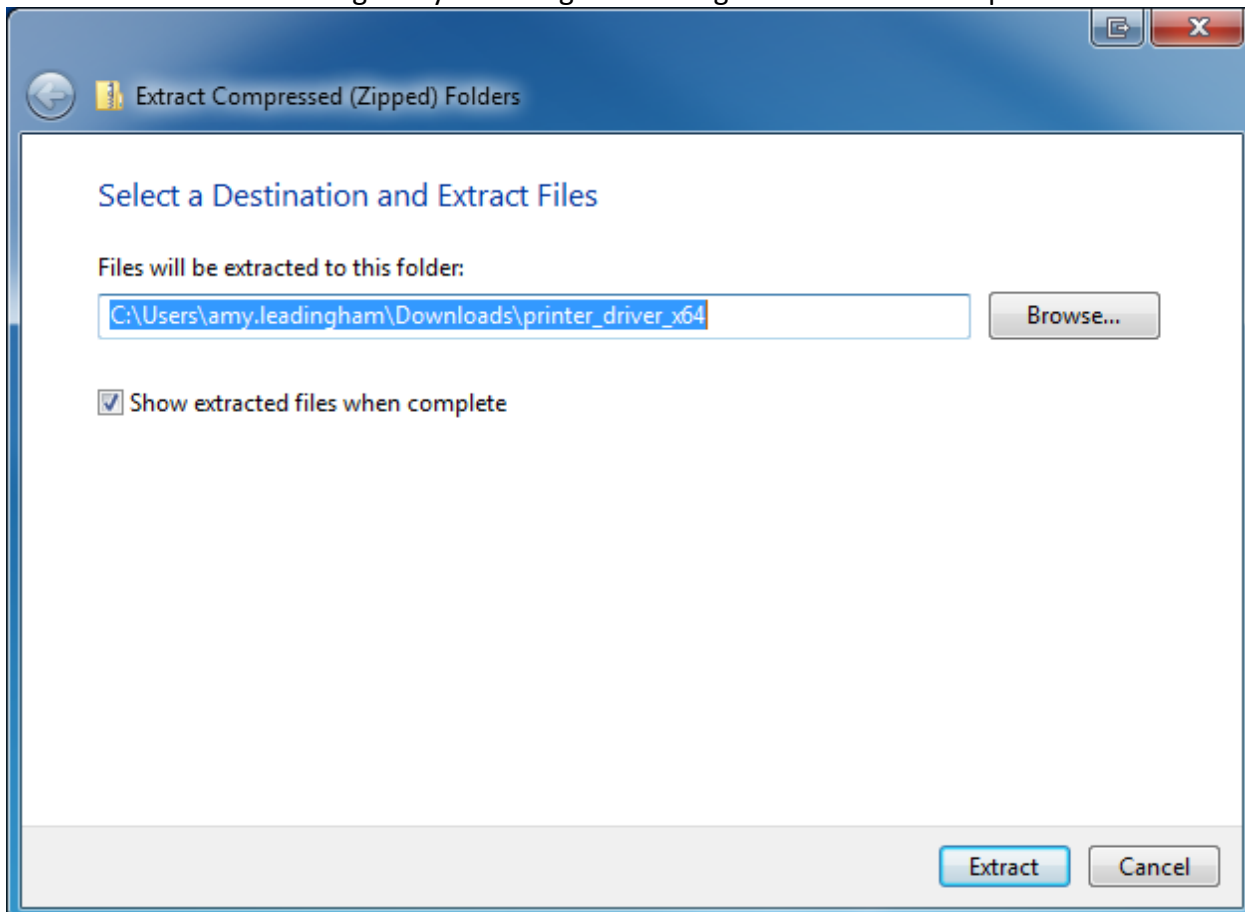
Once the download completes, open the Zip Folder named printer_driver_x64 from its saved location.



Click on Extract all files.



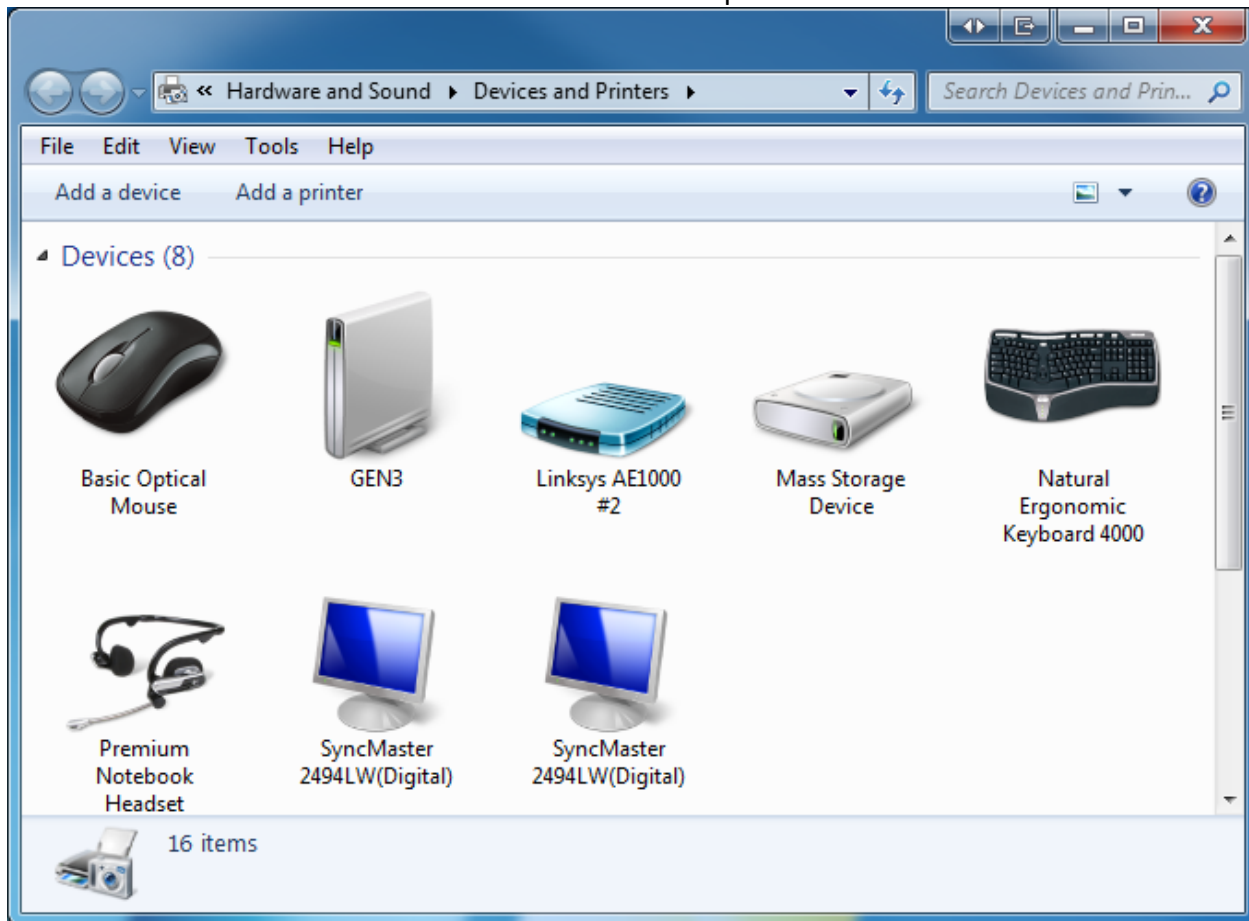
The Extraction Wizard will guide you through extracting the files from the zip folder. Click Extract.



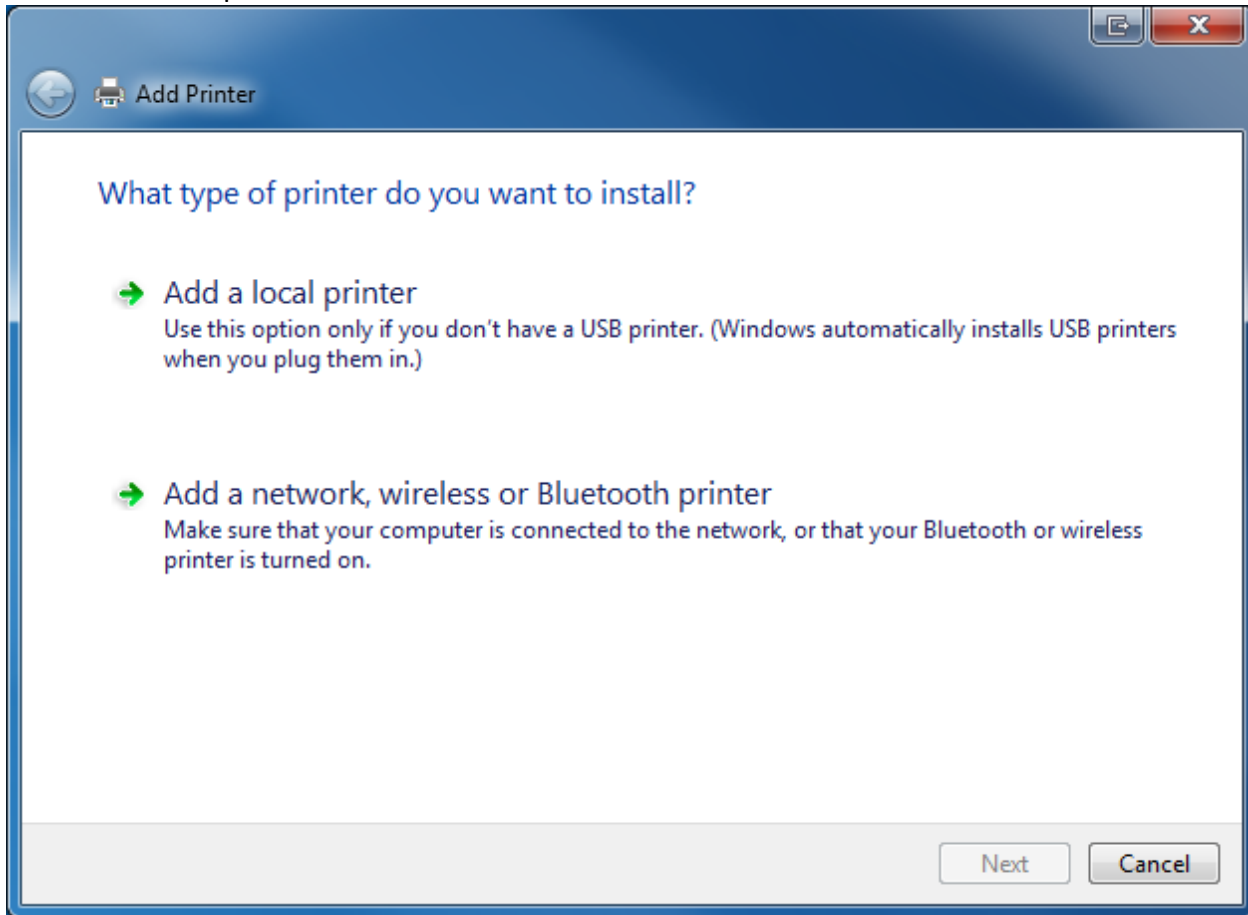
Once all files have been extracted, a new folder will be created named printer_driver_x64.

Step Four: Add a Printer

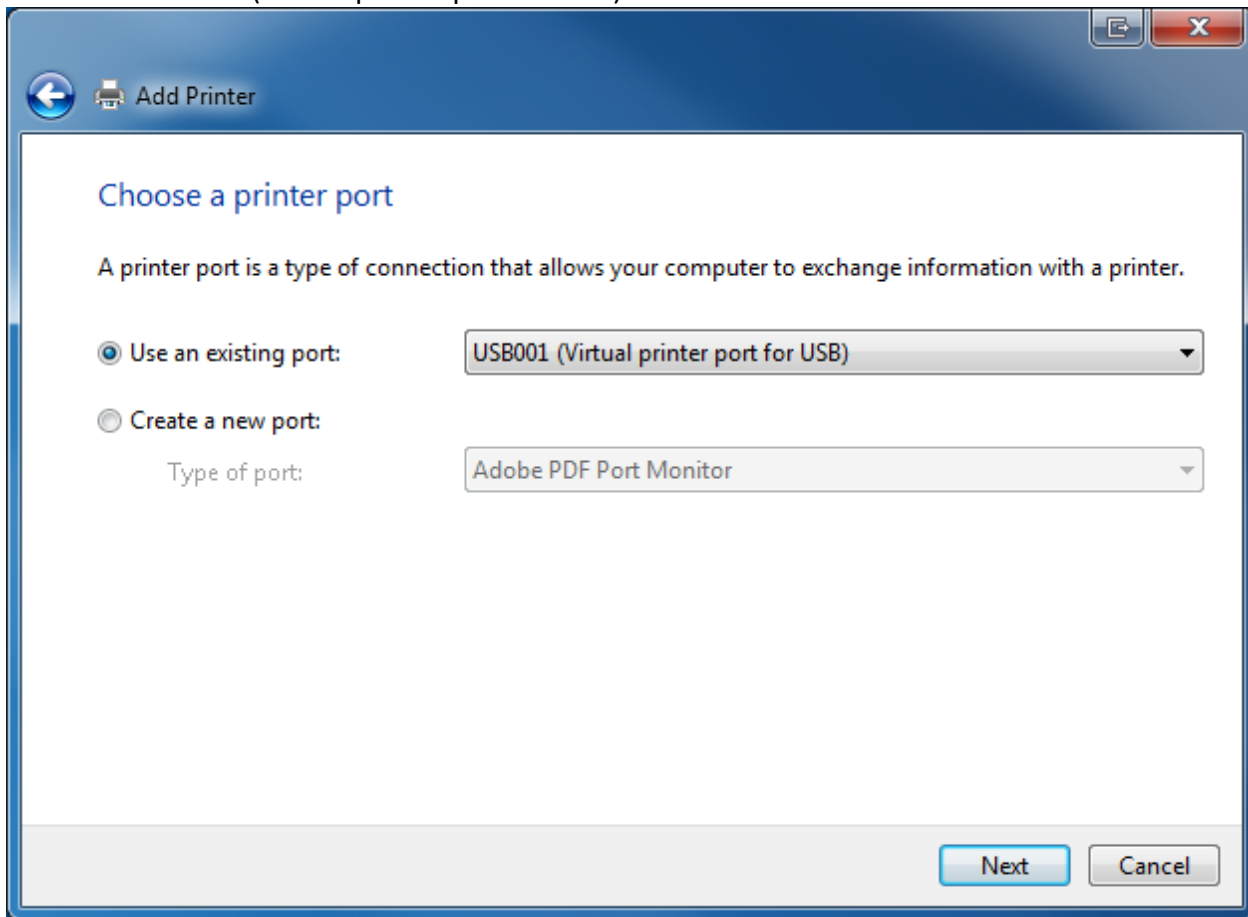
Go to the Start Menu > Devices & Printers. Click Add a printer to start the Add Printer Wizard.



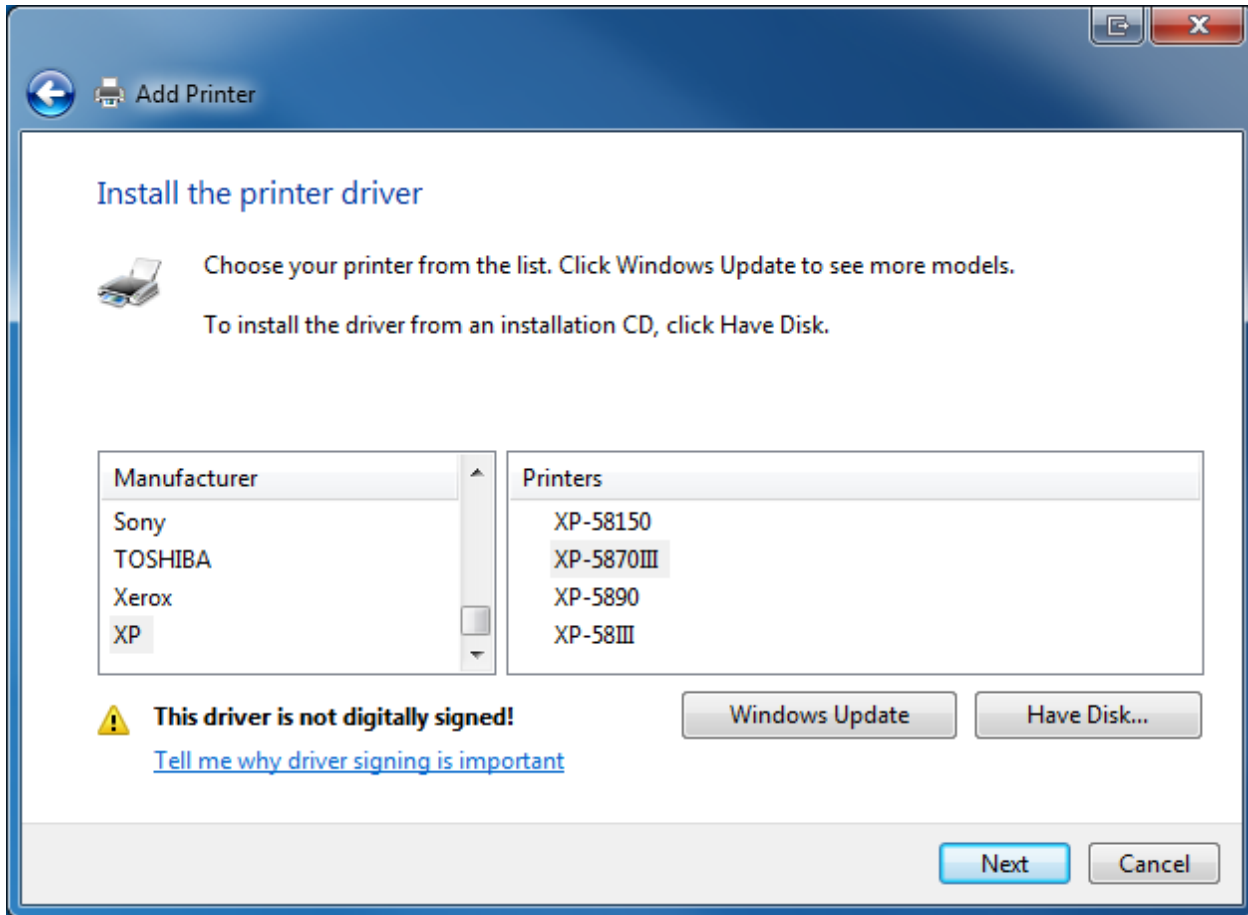
Click Add a local printer.



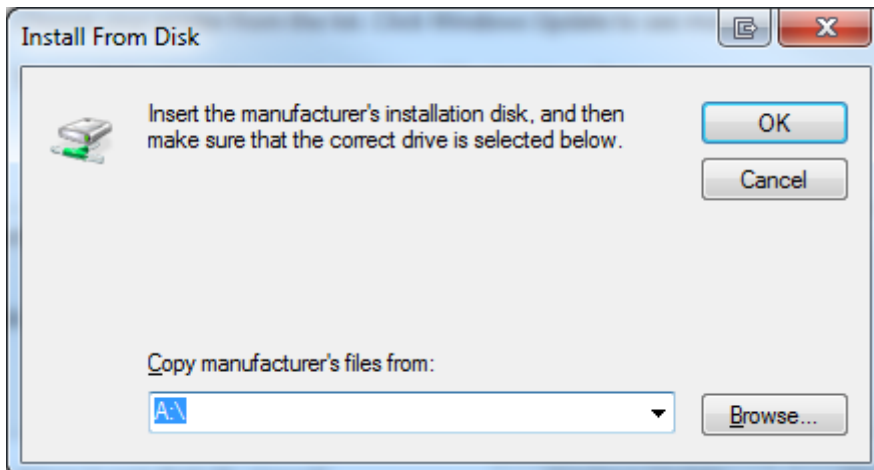
Select the USB001 (Virtual printer port for USB) and click Next.



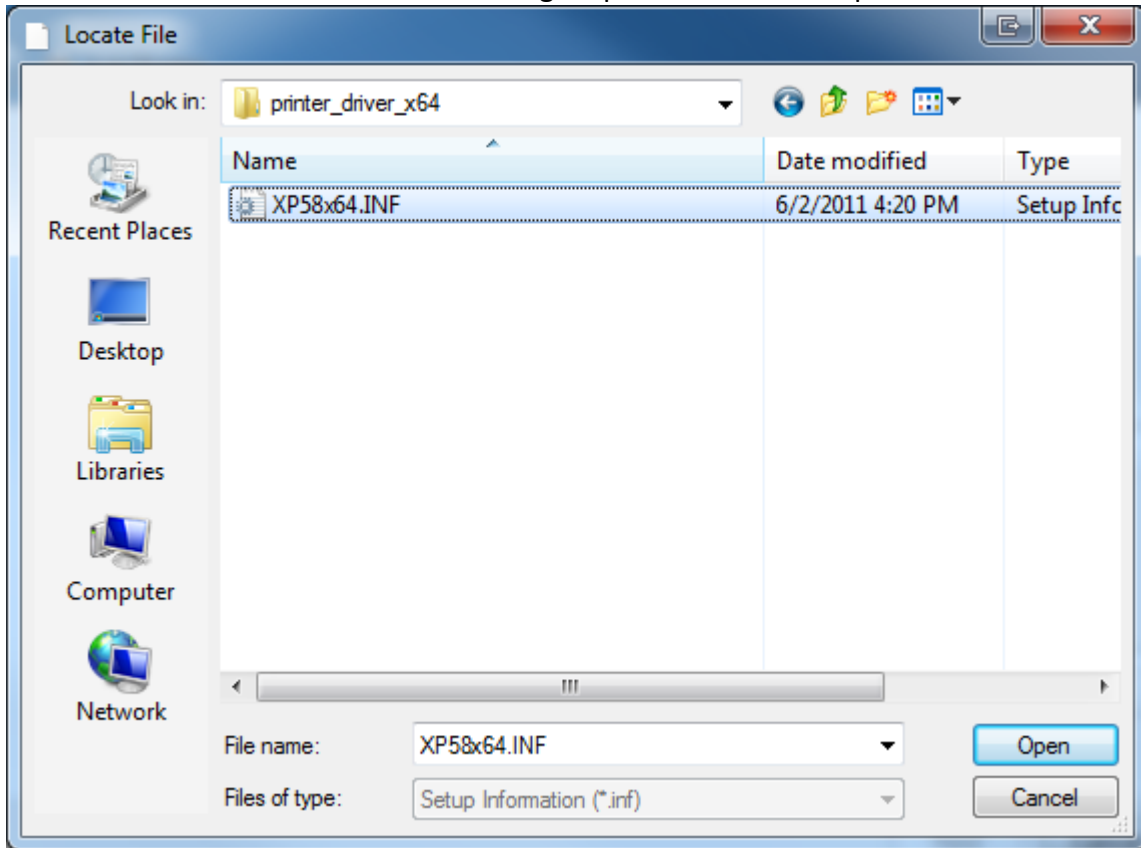
Click Have Disk.



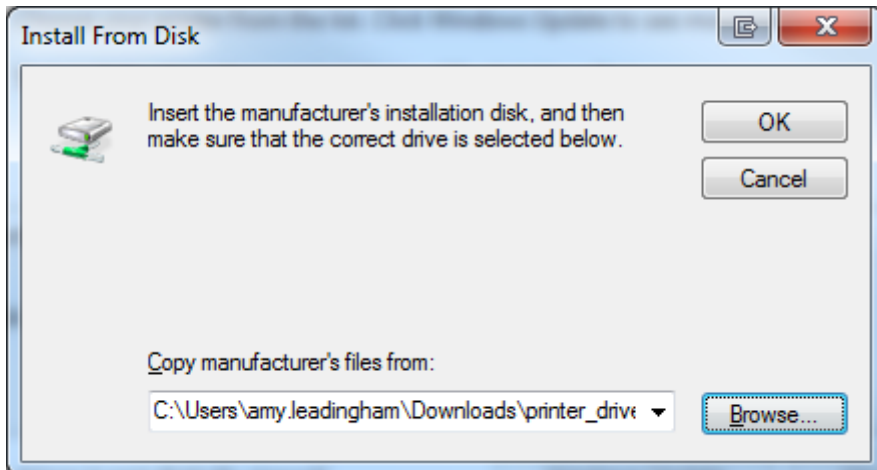
Click Browse.



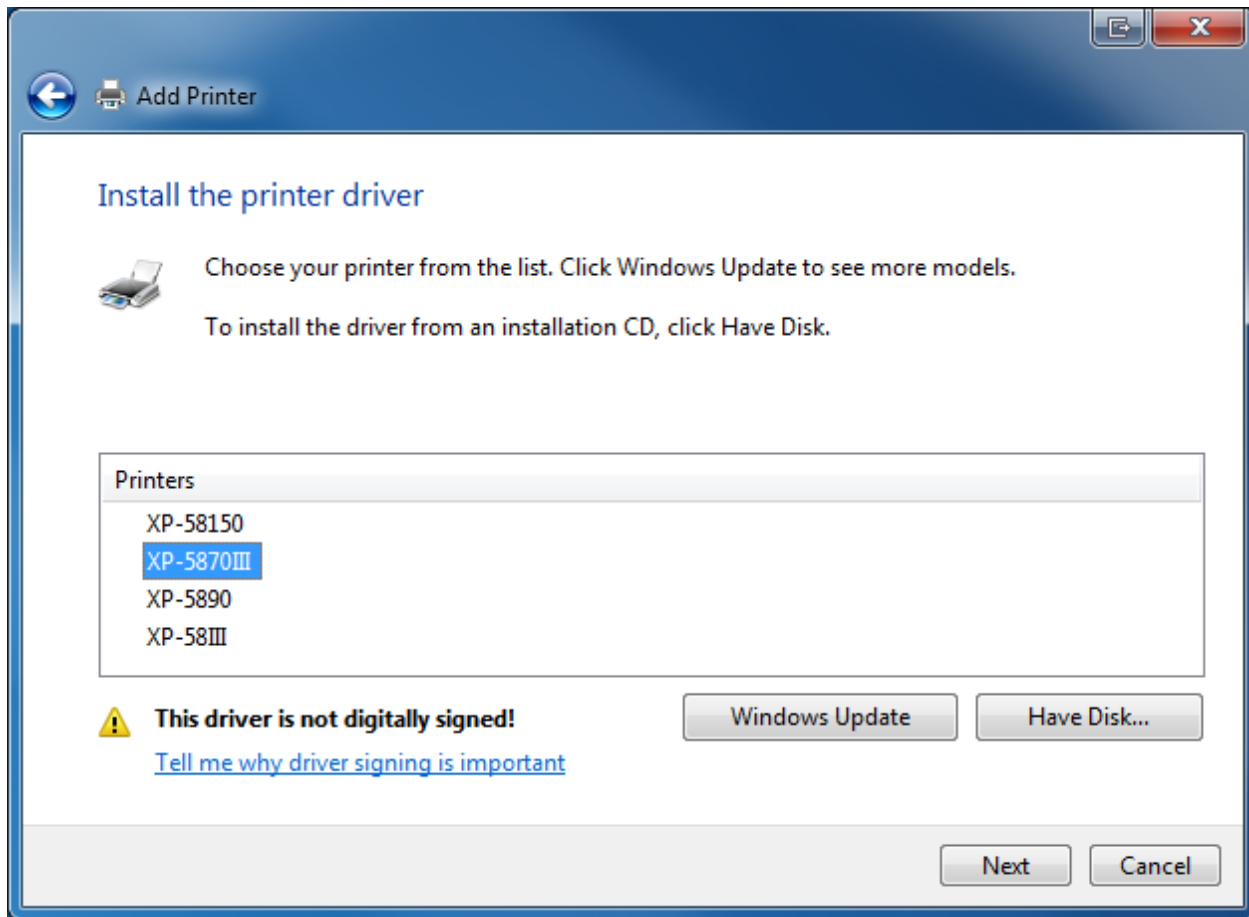
Locate the driver that was installed during Step Three and Click Open.



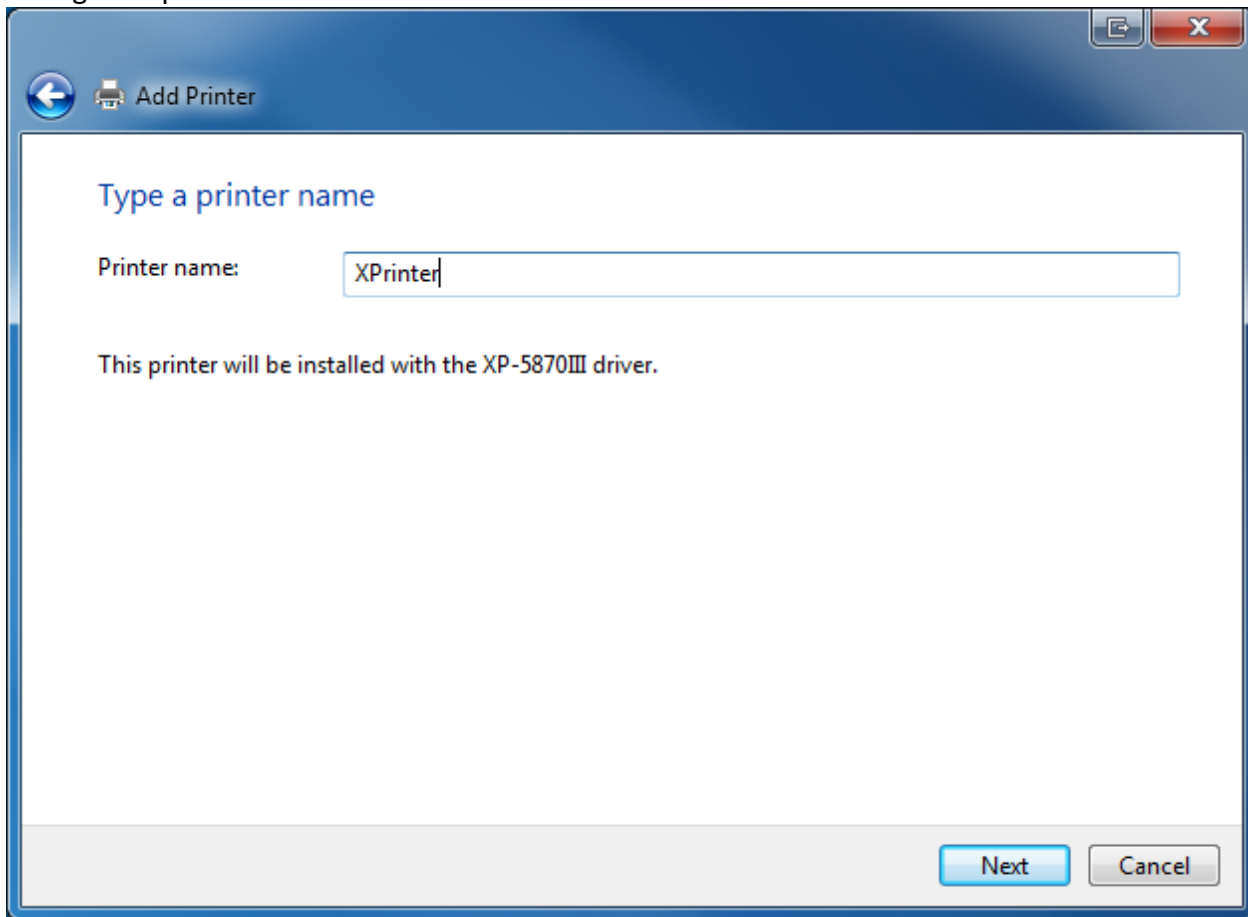
Click Ok.



Select XP-5870III and click Next.



Change the printer name and click Next.

A screenshot of a Windows 'Add Printer' dialog box. The window has a blue title bar with a back arrow icon and a printer icon followed by the text 'Add Printer'. The main content area is white and contains the text 'Type a printer name' in blue. Below this is a label 'Printer name:' followed by a text input field containing 'XPrinter'. Underneath the input field is the text 'This printer will be installed with the XP-5870III driver.'. At the bottom right of the dialog box are two buttons: 'Next' and 'Cancel'.

← Add Printer

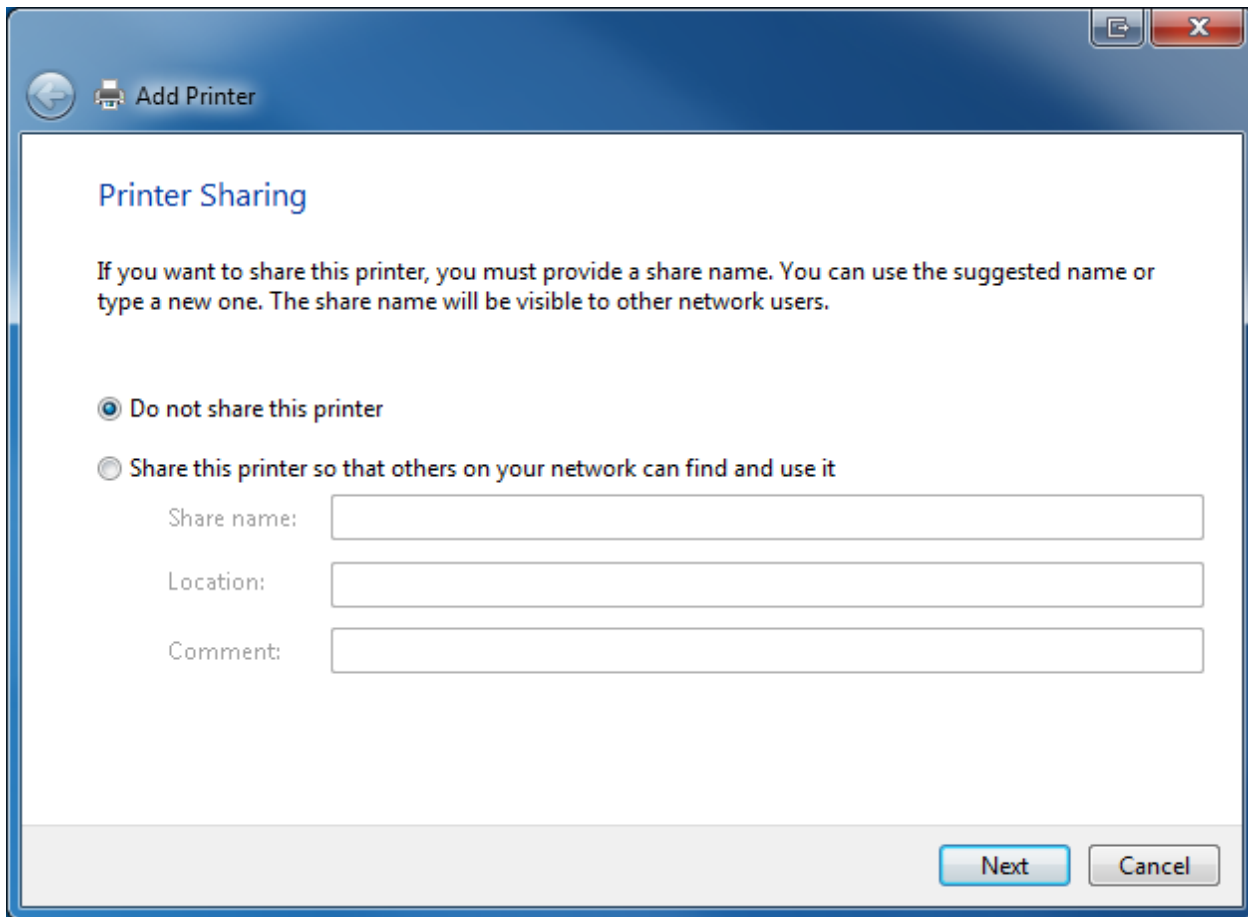
Type a printer name

Printer name:

This printer will be installed with the XP-5870III driver.

Next Cancel

Click Next.

A screenshot of a Windows 'Add Printer' dialog box. The window title is 'Add Printer'. The main heading is 'Printer Sharing'. Below the heading is a paragraph: 'If you want to share this printer, you must provide a share name. You can use the suggested name or type a new one. The share name will be visible to other network users.' There are two radio button options: 'Do not share this printer' (which is selected) and 'Share this printer so that others on your network can find and use it'. Below the second option are three text input fields labeled 'Share name:', 'Location:', and 'Comment:'. At the bottom right of the dialog are 'Next' and 'Cancel' buttons.

Printer Sharing

If you want to share this printer, you must provide a share name. You can use the suggested name or type a new one. The share name will be visible to other network users.

Do not share this printer

Share this printer so that others on your network can find and use it

Share name:

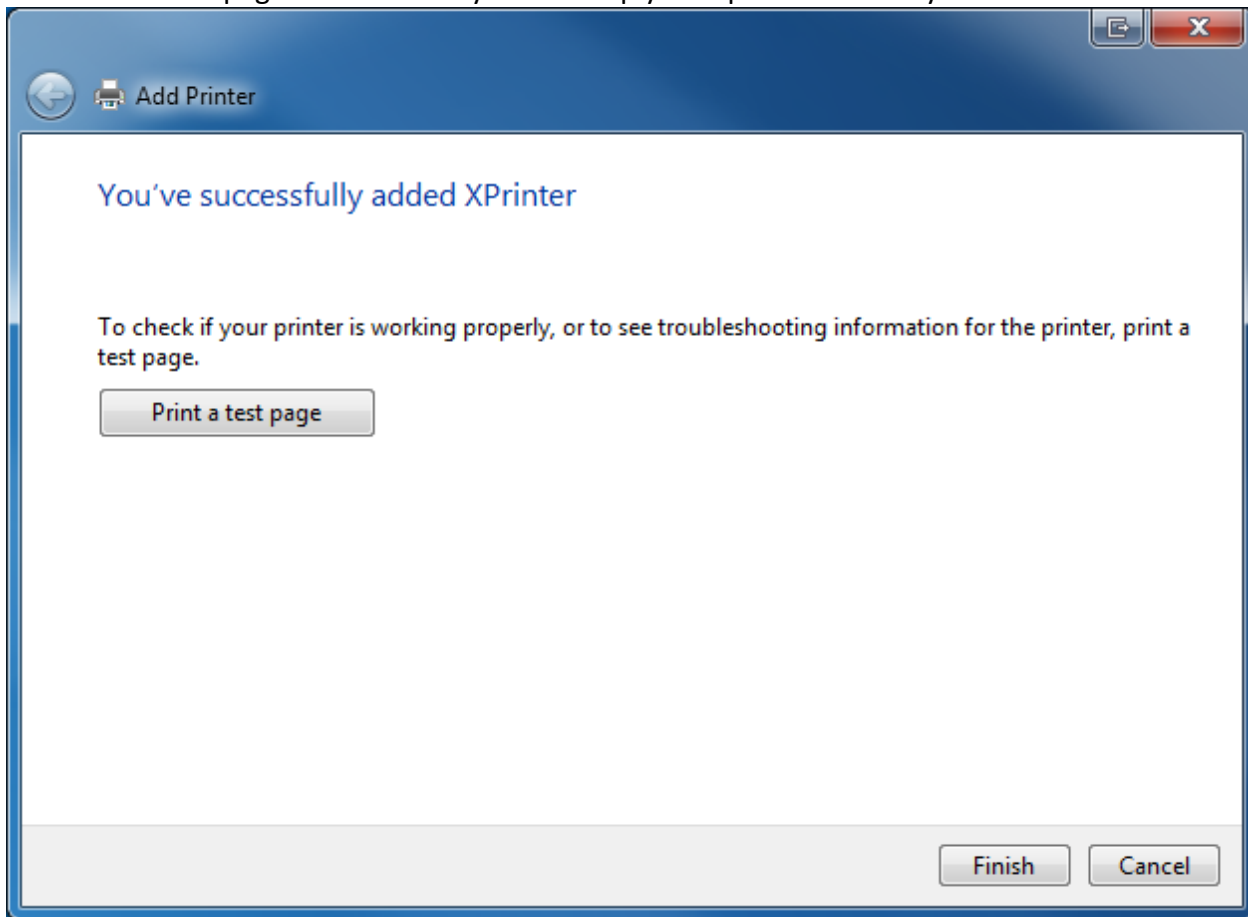
Location:

Comment:

Next Cancel



Click Print a test page to make sure you've setup your Xprinter correctly.



Once the Test Page has printed, you're now ready to print credit card receipts from USBSwiper!

If you have any general questions, please email support@usbwiper.com or if you need to schedule a session to complete the installation, please call our Technical Support Team @ (816)332-6545.

Thanks again for choosing USBSwiper!