



# Xprinter: Thermal Receipt Printer Installation Guide (Windows XP 64-bit)

Thank you for purchasing the USBSwiper Thermal Receipt Printer for the Windows 32-bit Operating Systems.

This installation guide will walk you through the necessary steps in order to install this printer properly on your system and use with USBSwiper™ software.

As always, if you have any questions please call our Technical Support Team @ (816)332-6545.

## Step One: Unpacking your Thermal Printer

1. Unpack your printer and save the packaging materials.
2. Make sure you have the following items below. (Thermal receipt paper not included.)
  - Printer
  - Power adapter
  - Power cord
  - USB to DB25 adapter cable

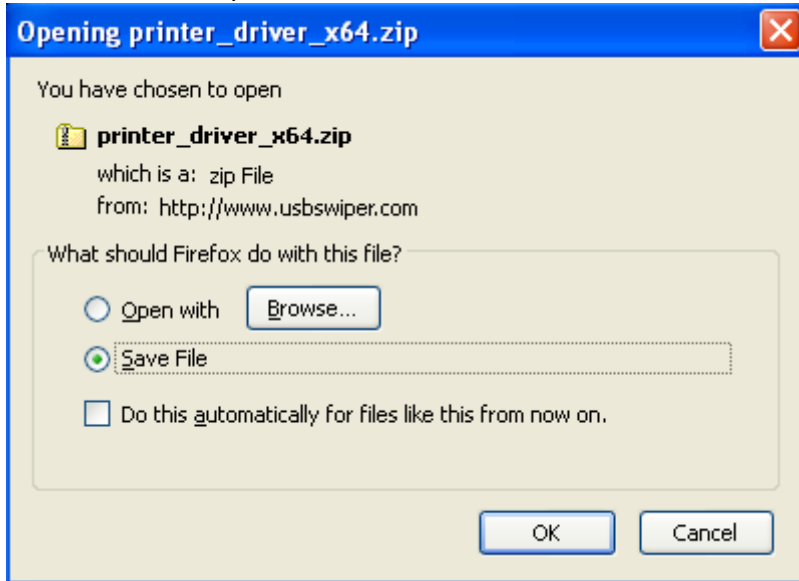
## Step Two: Connecting your Xprinter Thermal Receipt Printer

1. Plug the power cord into the power adapter.
2. Plug the power adapter into the printer.
3. Plug the other end into a power outlet.
4. Plug the USB adapter cable into the printer and tighten the screws.
5. Plug the other end of the USB adapter into an available USB port on your computer.

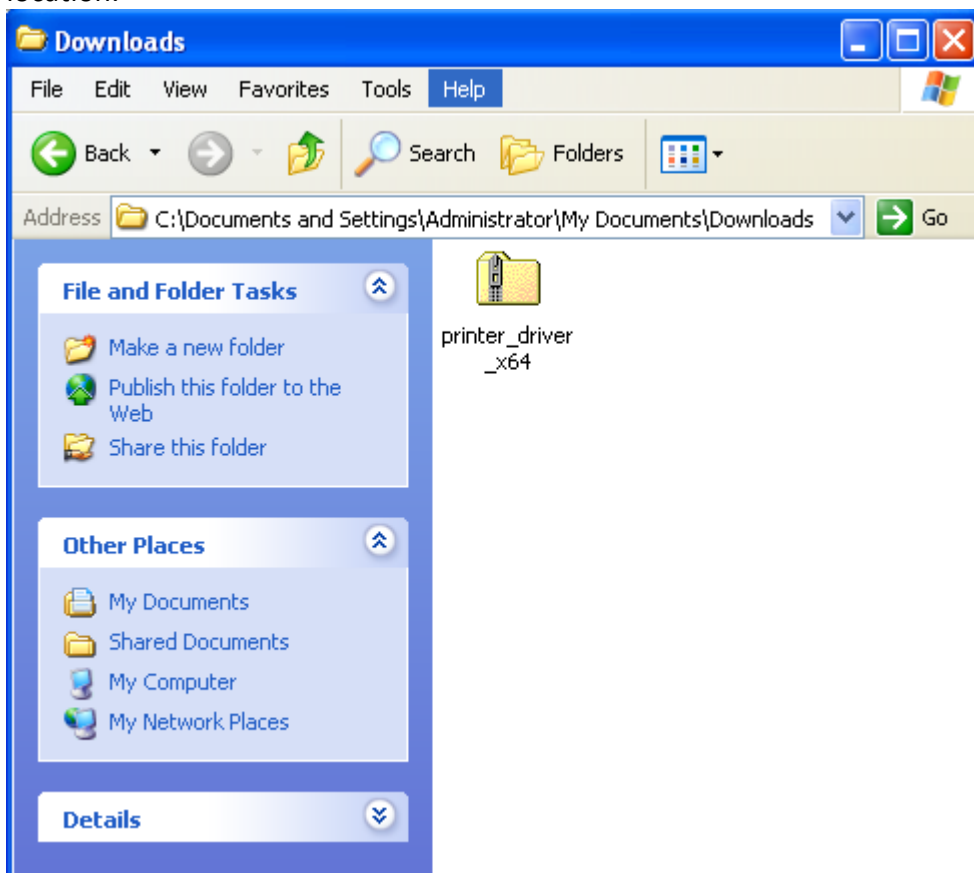
## Step Three: Installing the Software

1. Close all running applications.
2. Check your Operating System to confirm you're running a 64 not 32-bit OS.
  - Go to the Start Menu > Right-click on My Computer
  - Under the General tab, it will say Microsoft Windows XP Professional x64 Edition.
3. Go to [www.usbswiper.com/download](http://www.usbswiper.com/download) and click on the 64-bit link next to Xprinter Drivers link.

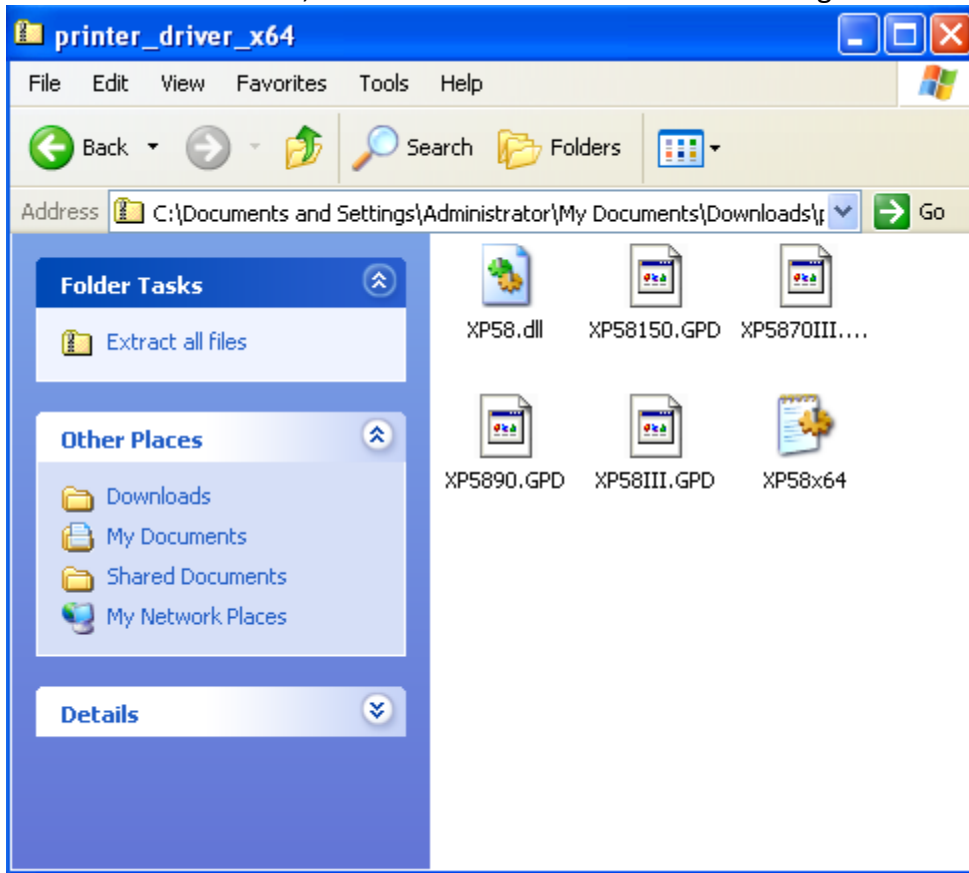
When asked to Open or Save File, Select Save File and Click OK.



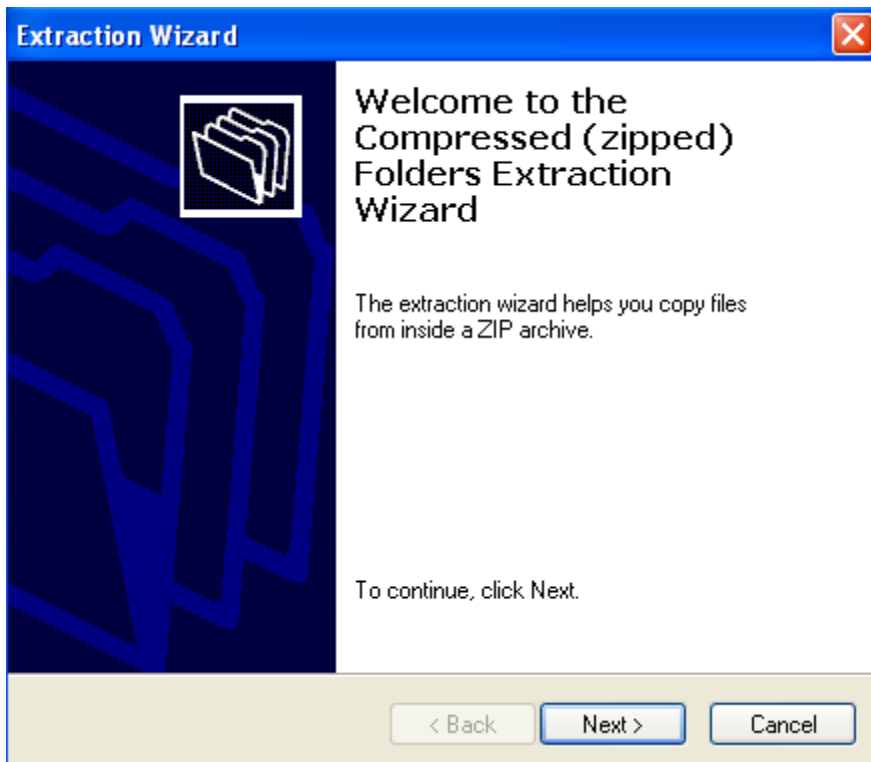
Once the download completes, open the Zip Folder named printer\_driver\_x64 from its saved location.



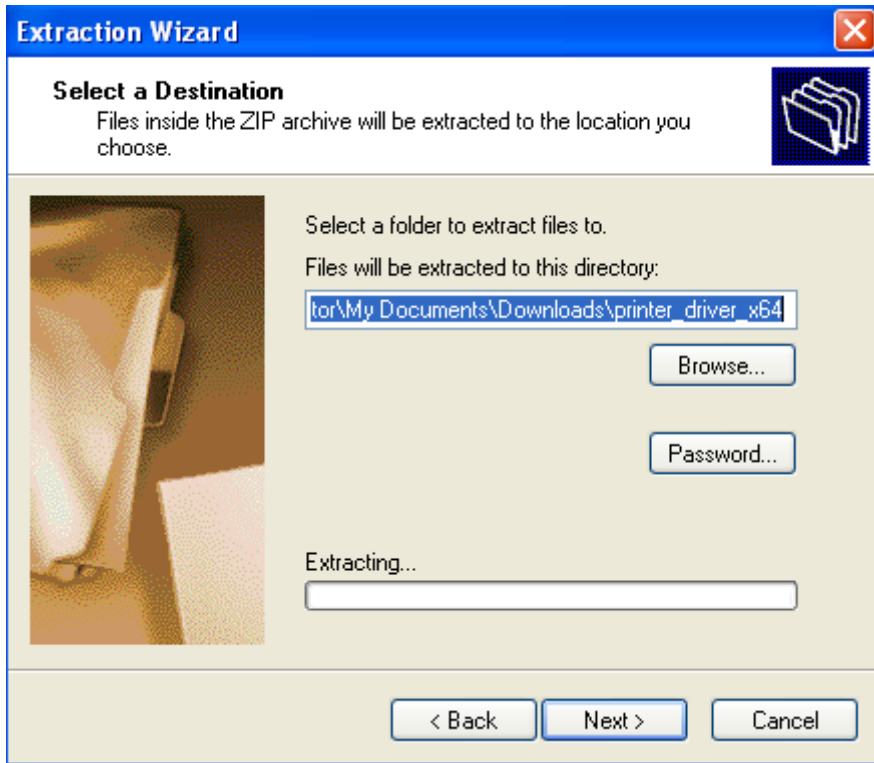
Click on Extract all files, from the Folder Tasks on the left to begin the Extraction Wizard.



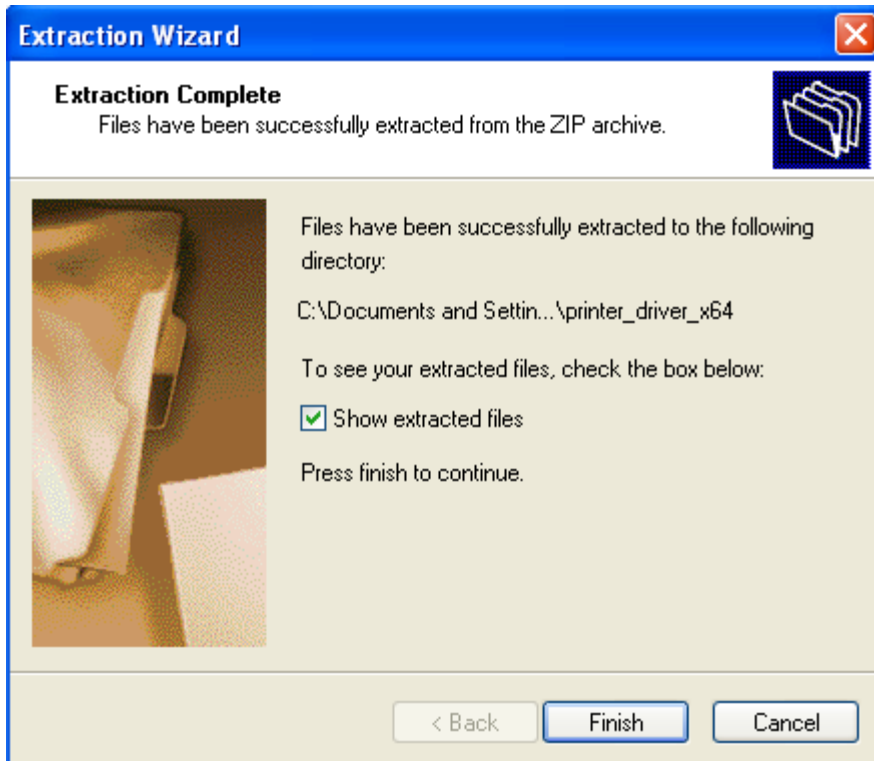
The Extraction Wizard will guide you through extracting the files from the zip folder. Click Next.



Click Next.



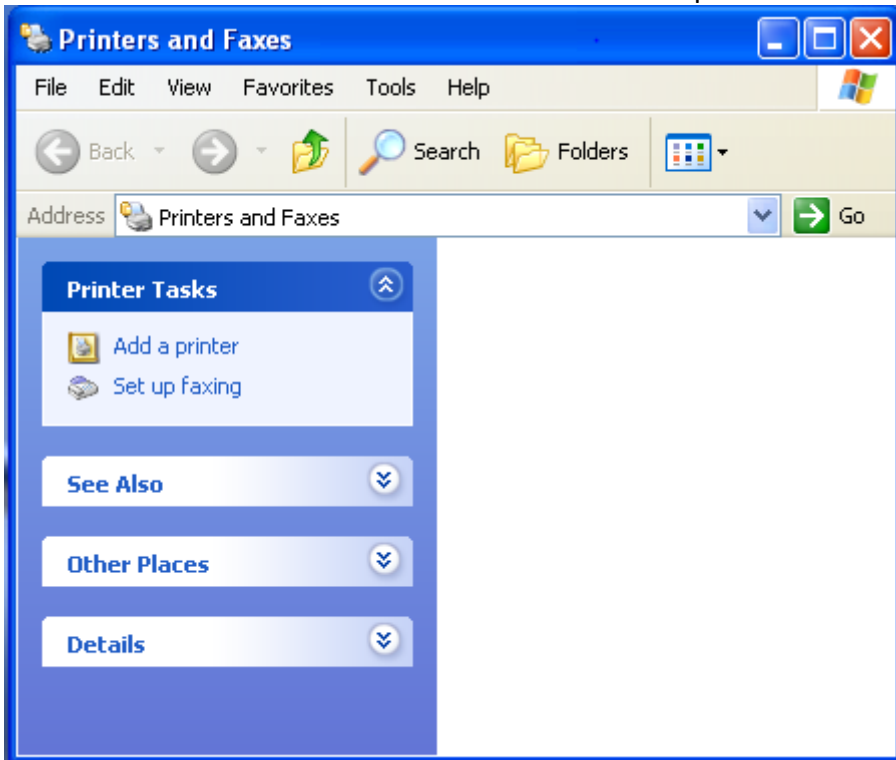
Click Finish.



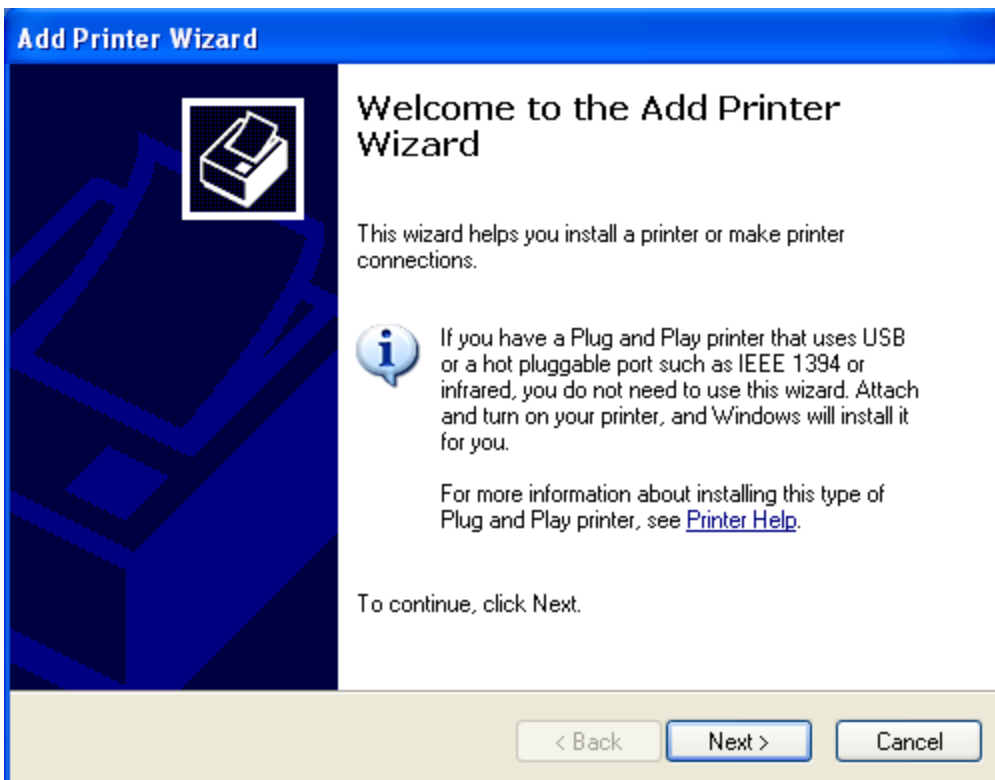
Once all files have been extracted, a new folder will be created named printer\_driver\_x64.

## Step Four: Add a Printer

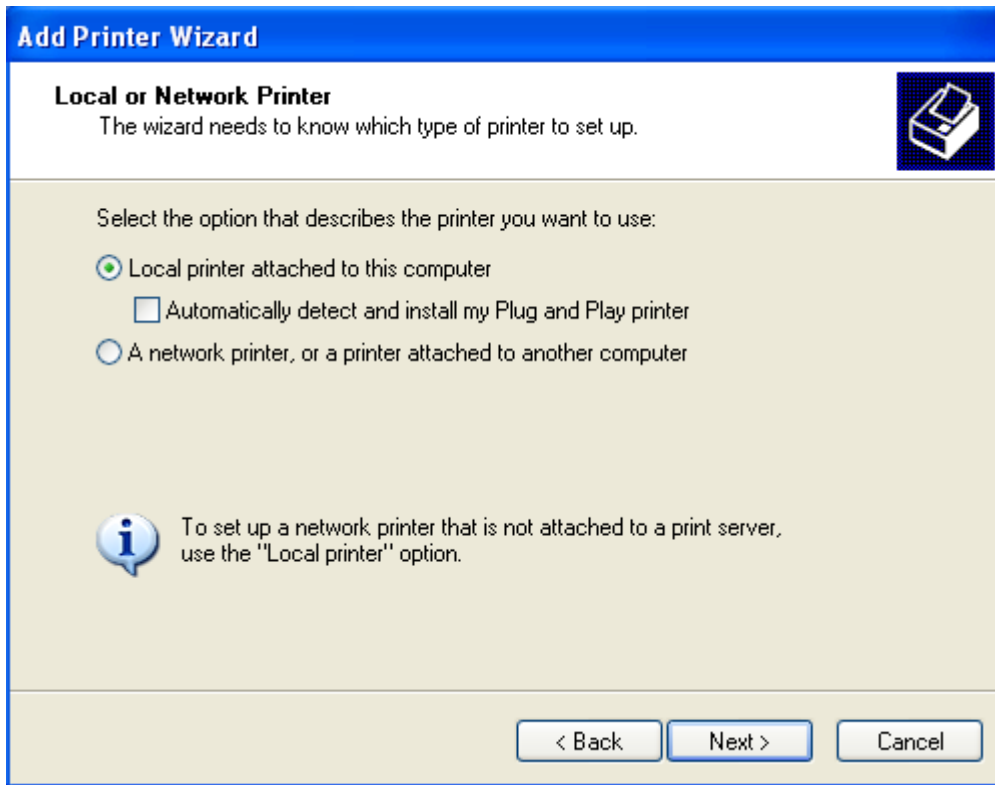
Go to the Start Menu > Printers & Faxes. Click Add a printer to start the Add Printer Wizard.



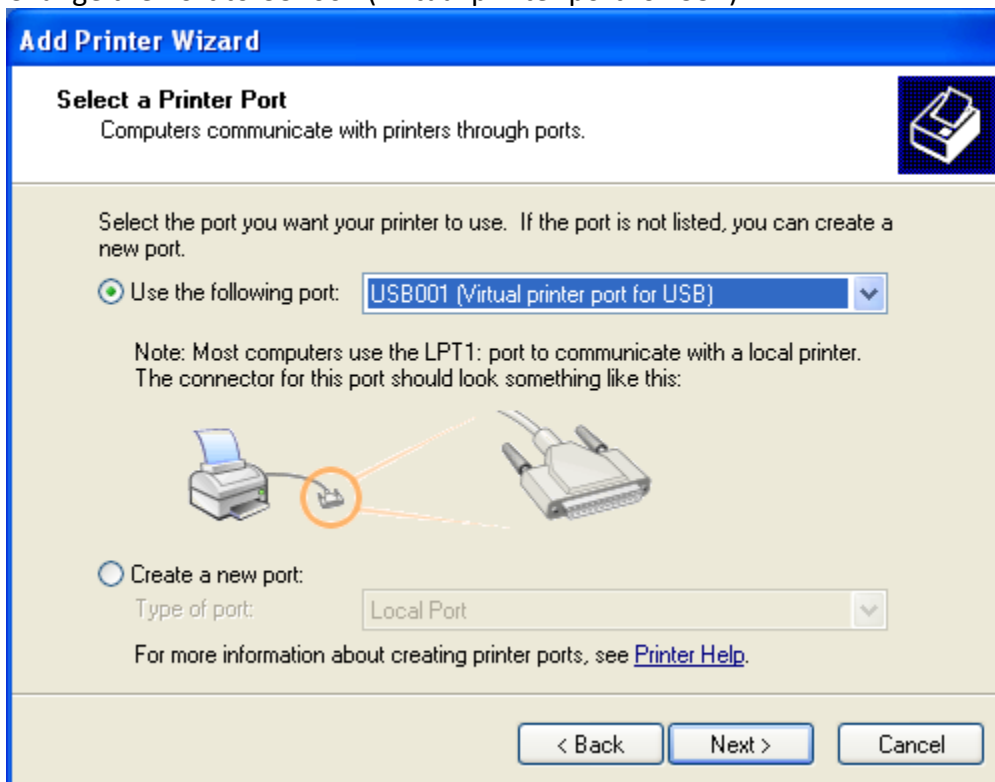
Click Next.



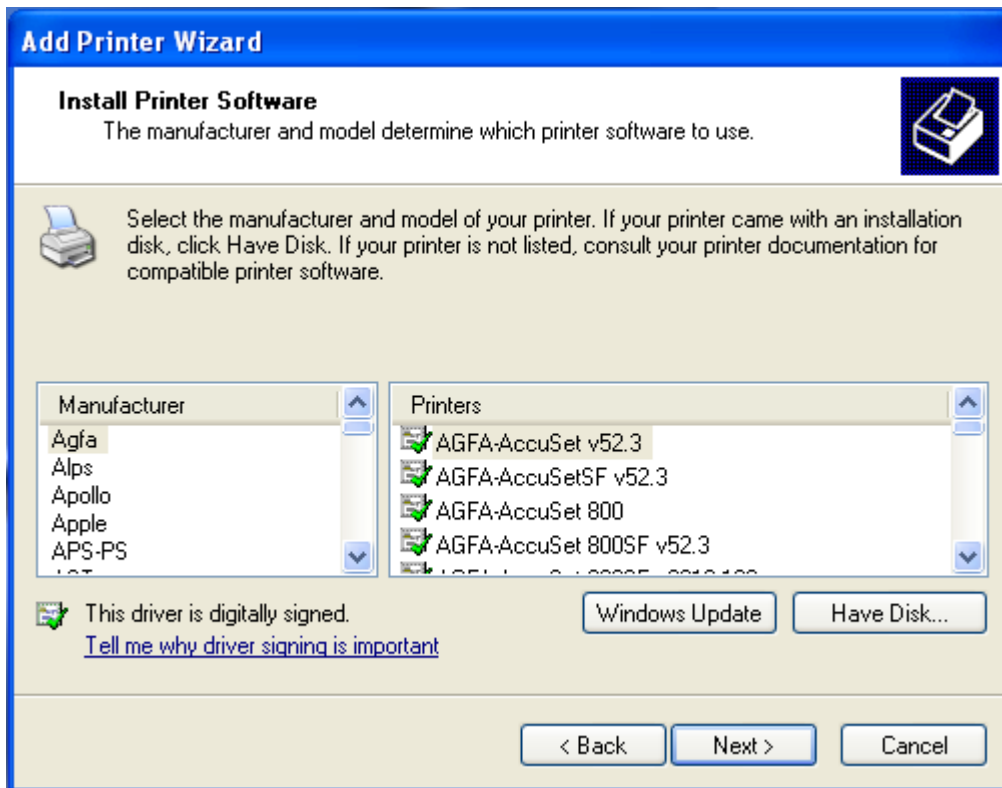
Deselect the Automatically detect and install my Plug and Play printer.  
Click Next.



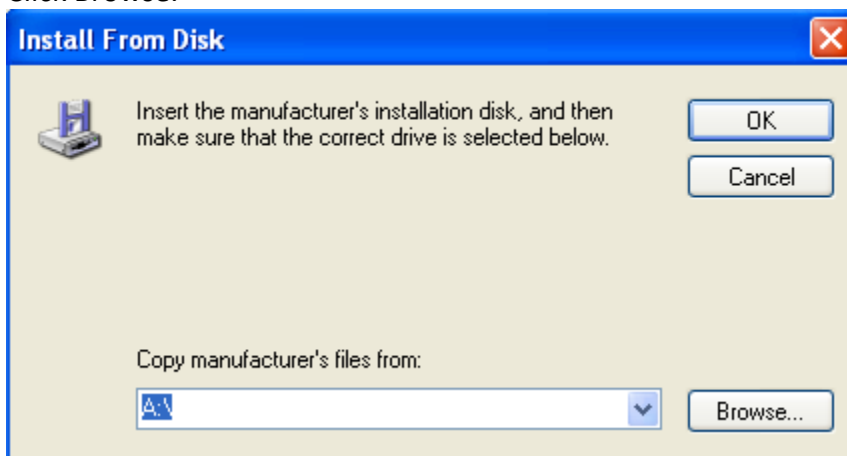
Change the Port to USB001 (Virtual printer port for USB).



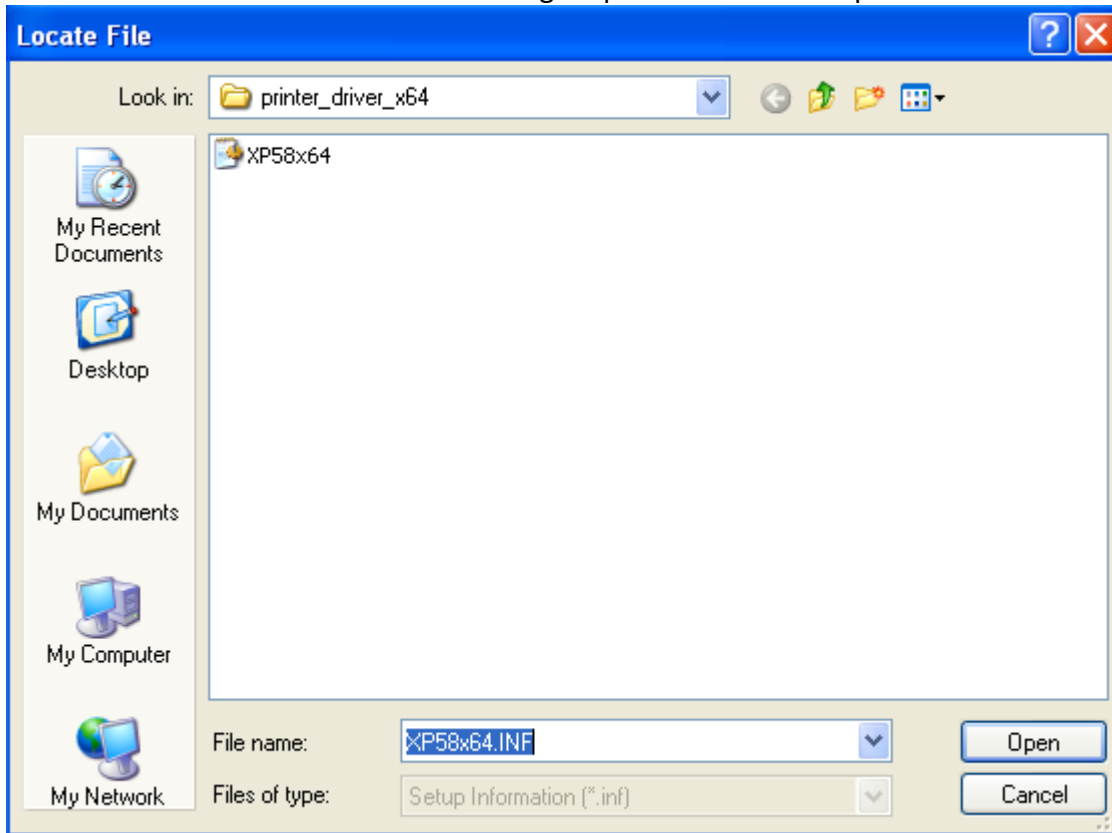
Click on Have Disk.



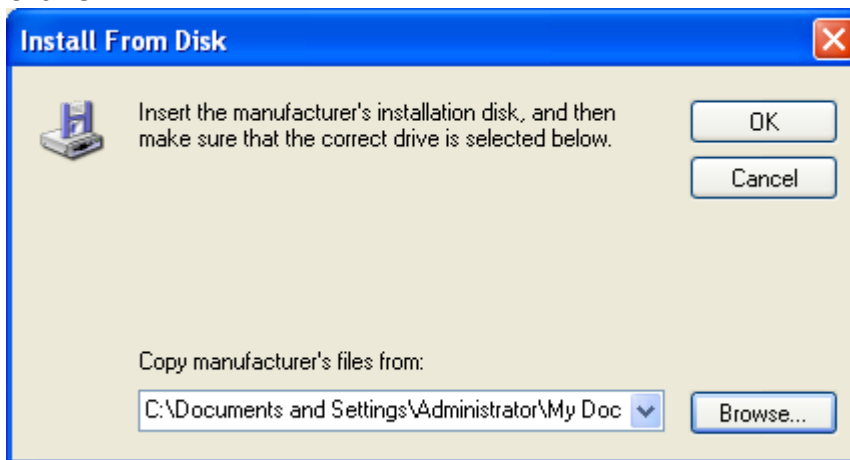
Click Browse.



Locate the driver that was installed during Step Three and Click Open.

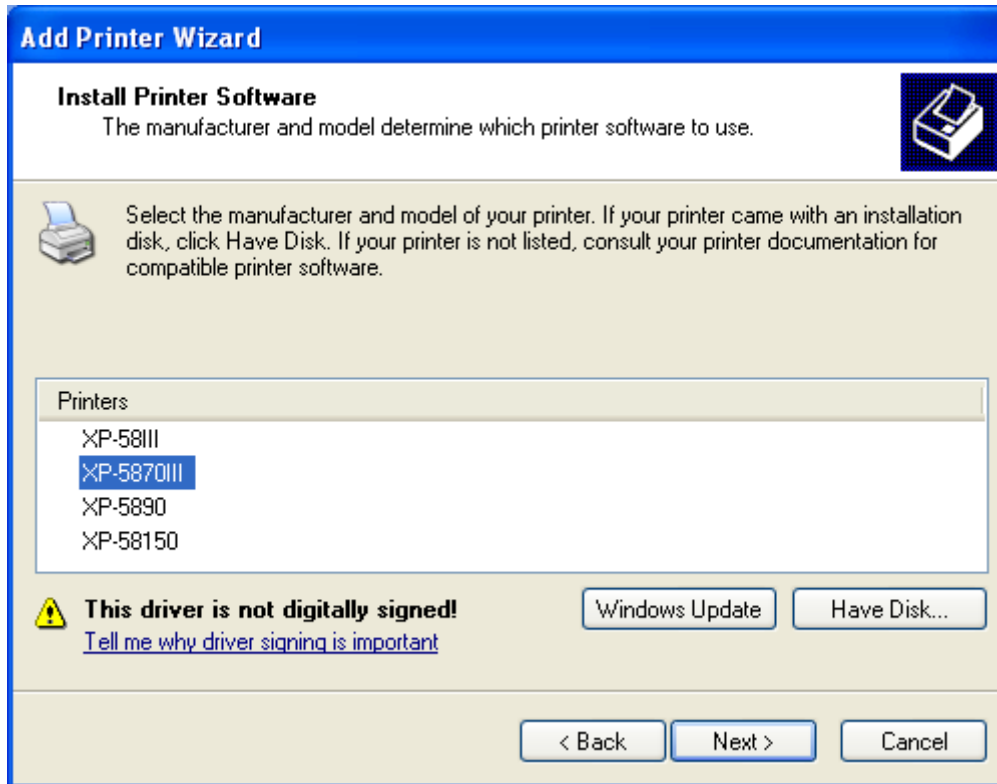


Click OK.

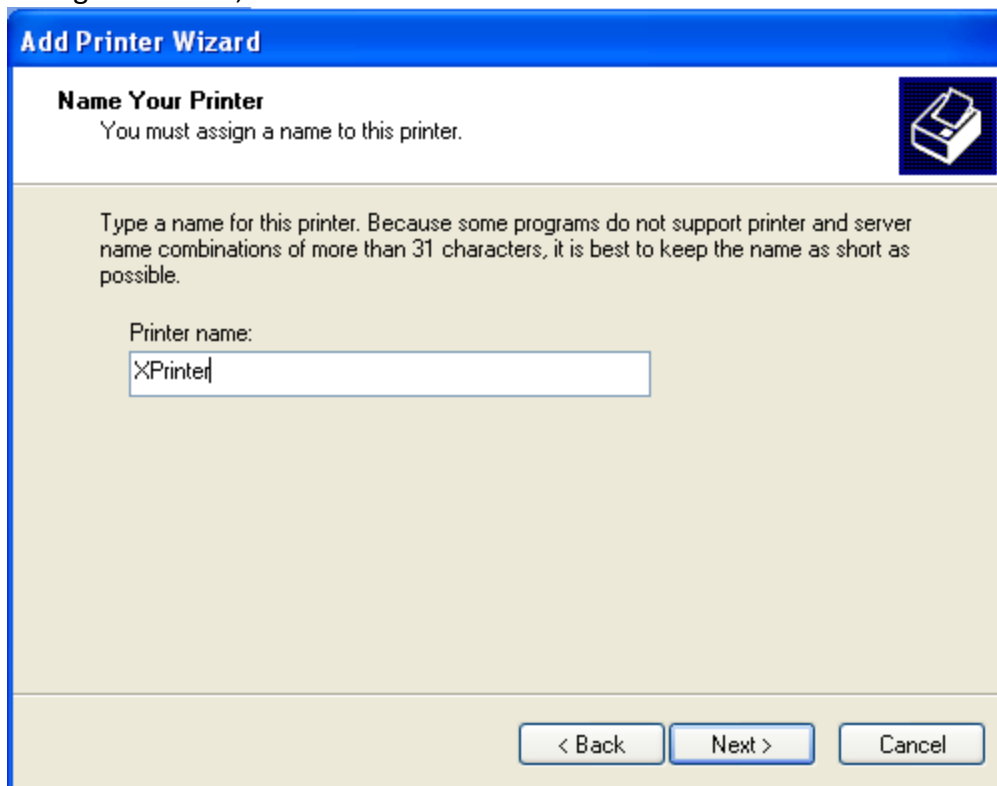




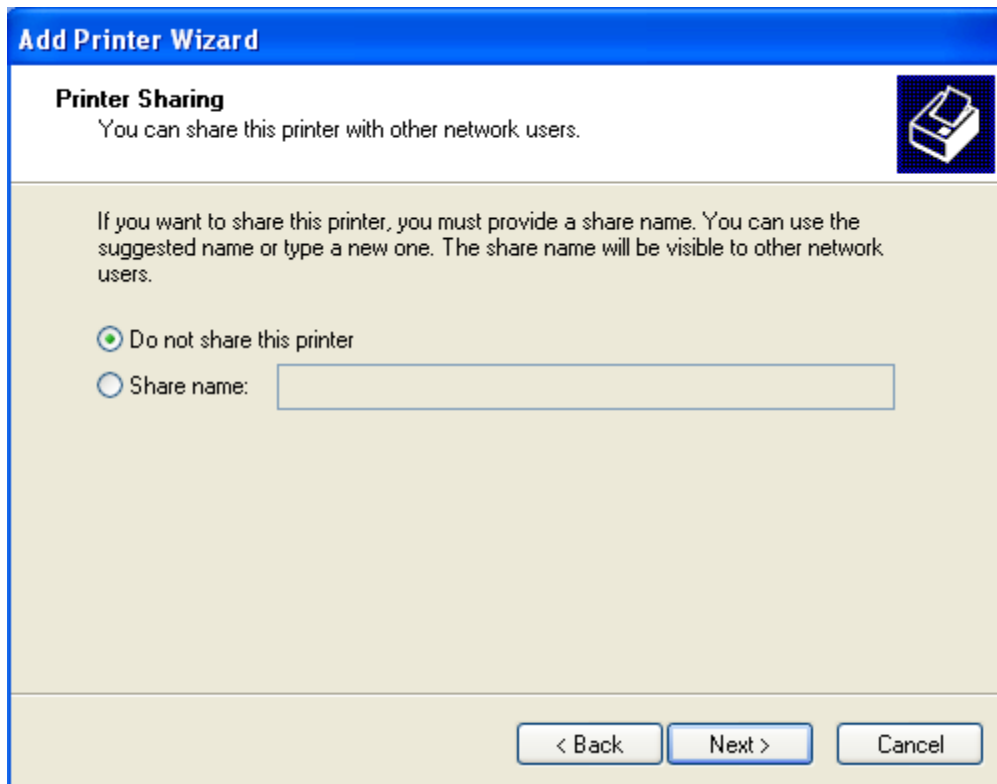
Select XP-5870III from the list and Click Next.



Change the name, if desired.



Click Next.

This is a screenshot of the "Add Printer Wizard" window, specifically the "Printer Sharing" step. The window has a blue title bar with the text "Add Printer Wizard". Below the title bar, the section is titled "Printer Sharing" and includes the instruction "You can share this printer with other network users." To the right of this text is a printer icon. The main area contains a paragraph explaining that a share name is required for sharing. Below this are two radio button options: "Do not share this printer" (which is selected) and "Share name:" followed by an empty text input field. At the bottom of the window are three buttons: "< Back", "Next >", and "Cancel".

**Add Printer Wizard**

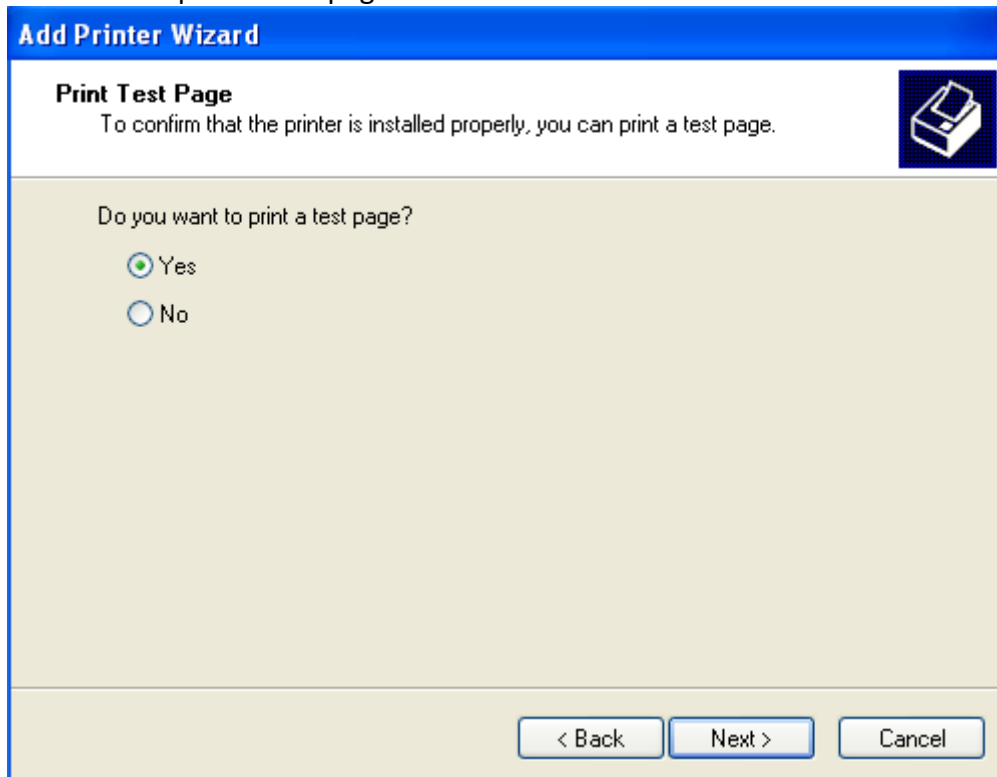
**Printer Sharing**  
You can share this printer with other network users.

If you want to share this printer, you must provide a share name. You can use the suggested name or type a new one. The share name will be visible to other network users.

Do not share this printer  
 Share name:

< Back   Next >   Cancel

Click Next to print a test page.

This is a screenshot of the "Add Printer Wizard" window, specifically the "Print Test Page" step. The window has a blue title bar with the text "Add Printer Wizard". Below the title bar, the section is titled "Print Test Page" and includes the instruction "To confirm that the printer is installed properly, you can print a test page." To the right of this text is a printer icon. The main area contains the question "Do you want to print a test page?" followed by two radio button options: "Yes" (which is selected) and "No". At the bottom of the window are three buttons: "< Back", "Next >", and "Cancel".

**Add Printer Wizard**

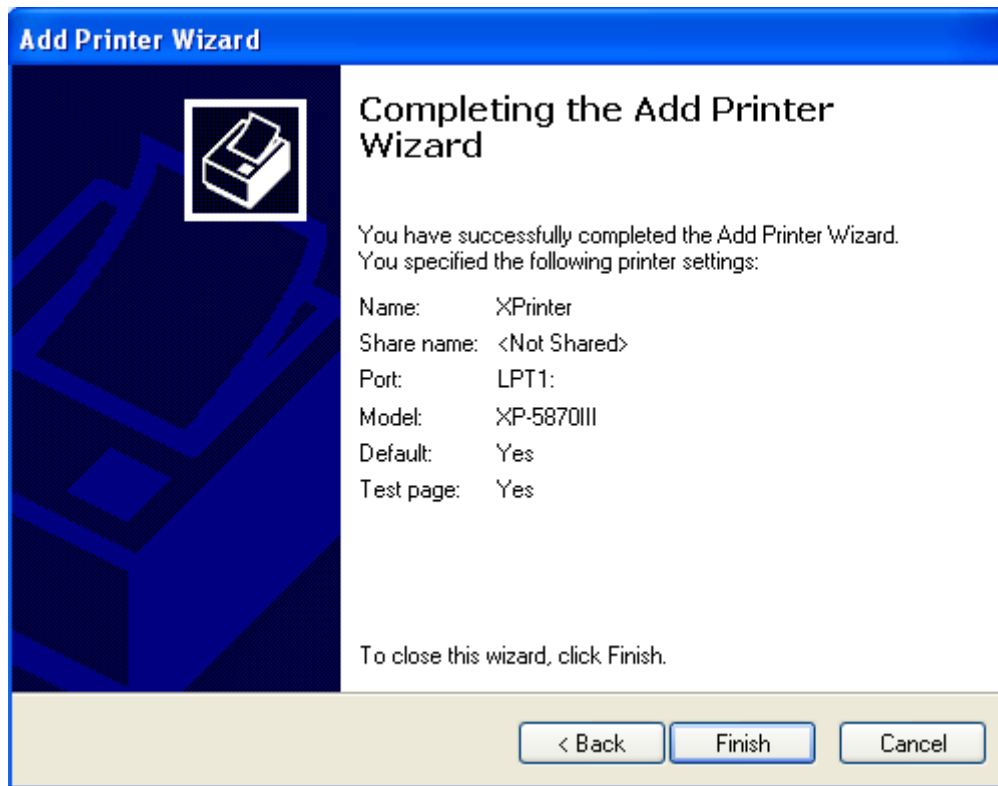
**Print Test Page**  
To confirm that the printer is installed properly, you can print a test page.

Do you want to print a test page?

Yes  
 No

< Back   Next >   Cancel

Click Finish.



Once the Test Page has printed, you're now ready to print credit card receipts from USBSwiper!

If you have any general questions, please email [support@usbswiper.com](mailto:support@usbswiper.com) or if you need to schedule a session to complete the installation, please call our Technical Support Team @ (816)332-6545.

Thanks again for choosing USBSwiper!